

Bugs fixed

- Logging of data is now possible even if there is no plan loaded for the relevant system in labCONSOL
- labCONSOL no longer gives timeout messages when applying a plan with compound terminations and steps created by copying steps and re-arranged by drag and drop

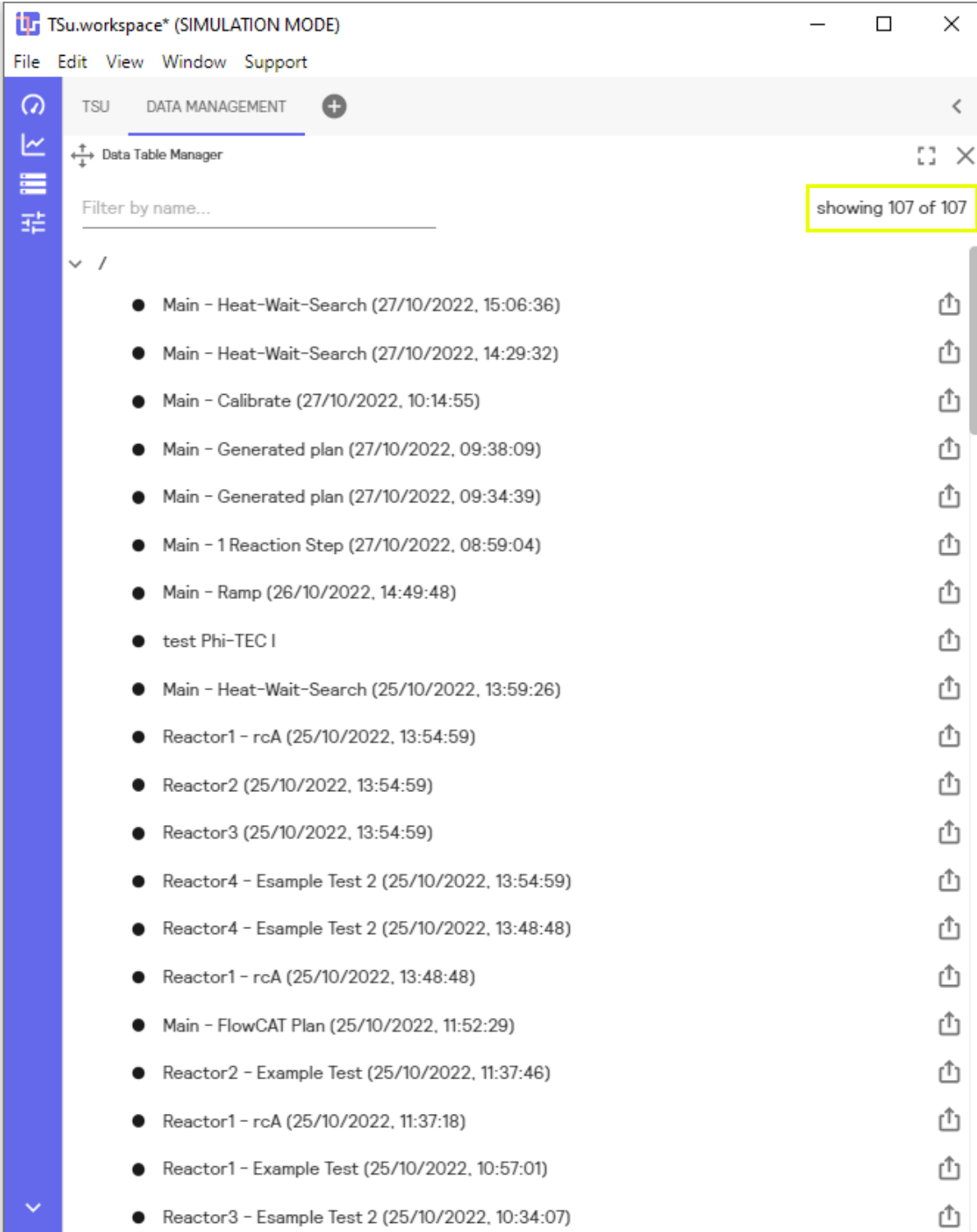
Improvements

- 1) Filtering data tables is now possible by typing part of the file the name (see pages 2-3 for example screenshots).
- 2) A manually entered temperature can now be used in pH calibrations (see pages 4-5 for example screenshots).
- 3) Switching between Simulation mode and Live mode can now be done from the labCONTROL icon (see pages 6-7 for example screenshots).
- 4) iQ shows progress when the data file is loaded/saved and gives an error message when the data file is in unknown format (e.g. missing column headers).

1) Filtering data tables by typing part of the file name

Go to Data Management.

List of all files available will be displayed (showing 107 of 107)



The screenshot shows the 'TSU.workspace* (SIMULATION MODE)' application window. The 'DATA MANAGEMENT' tab is active, displaying the 'Data Table Manager' interface. A search filter is present, and a status box indicates 'showing 107 of 107' files. The file list includes various simulation runs with their names and timestamps, each with an upload icon to its right.

File Name	Timestamp
Main - Heat-Wait-Search	(27/10/2022, 15:06:36)
Main - Heat-Wait-Search	(27/10/2022, 14:29:32)
Main - Calibrate	(27/10/2022, 10:14:55)
Main - Generated plan	(27/10/2022, 09:38:09)
Main - Generated plan	(27/10/2022, 09:34:39)
Main - 1 Reaction Step	(27/10/2022, 08:59:04)
Main - Ramp	(26/10/2022, 14:49:48)
test Phi-TEC I	
Main - Heat-Wait-Search	(25/10/2022, 13:59:26)
Reactor1 - rcA	(25/10/2022, 13:54:59)
Reactor2	(25/10/2022, 13:54:59)
Reactor3	(25/10/2022, 13:54:59)
Reactor4 - Esample Test 2	(25/10/2022, 13:54:59)
Reactor4 - Esample Test 2	(25/10/2022, 13:48:48)
Reactor1 - rcA	(25/10/2022, 13:48:48)
Main - FlowCAT Plan	(25/10/2022, 11:52:29)
Reactor2 - Example Test	(25/10/2022, 11:37:46)
Reactor1 - rcA	(25/10/2022, 11:37:18)
Reactor1 - Example Test	(25/10/2022, 10:57:01)
Reactor3 - Esample Test 2	(25/10/2022, 10:34:07)

Using the Filter, type part of the file name. In this example, we are filtering for files containing the word 'ramp' (showing 20 out of 107).

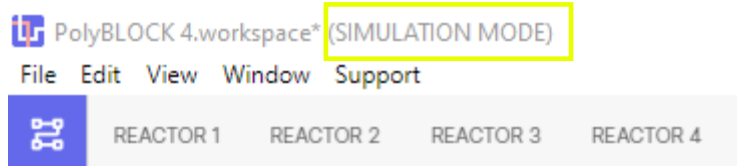
The screenshot shows the 'Data Table Manager' window in 'TSu.workspace* (SIMULATION MODE)'. The search filter 'ramp' is applied, resulting in 20 files being displayed out of a total of 107. The files listed are as follows:

- Main - Ramp (26/10/2022, 14:49:48)
- Main - Isothermal + Ramp Test (14/10/2022, 09:54:21)
- Main - Isothermal + Ramp Test (14/10/2022, 09:52:57)
- Main - Isothermal + Ramp Test (13/10/2022, 11:49:47)
- Reactor1 - heat-cool ramp test (03/08/2022, 08:35:39)
- Reactor3 - heat-cool ramp test-MA (02/08/2022, 14:44:01)
- Reactor4 - heat-cool ramp test-MA (02/08/2022, 14:44:01)
- Reactor2 - heat-cool ramp test (02/08/2022, 14:44:01)
- Main - Isothermal + Ramp Test (15/07/2022, 10:58:13)
- Reactor3 - heat-cool ramp test (15/07/2022, 10:12:12)
- Reactor2 - heat-cool ramp test-MA (15/07/2022, 10:12:12)
- Reactor4 - heat-cool ramp test (15/07/2022, 10:12:12)
- Reactor4 - heat-cool ramp test-MA (14/07/2022, 14:40:03)
- Reactor2 - heat-cool ramp test (14/07/2022, 14:40:03)
- Reactor3 - heat-cool ramp test-MA (14/07/2022, 14:40:03)
- Main - Isothermal + Ramp Test (13/07/2022, 14:54:09)
- Reactor2 - heat-cool ramp test (13/07/2022, 11:59:35)
- Reactor4 - heat-cool-ramp test 3 (13/07/2022, 11:59:35)
- Reactor3 - heat-cool ramp test 2 (13/07/2022, 11:59:35)
- Main - Isothermal + Ramp Test (11/04/2022, 11:57:40)

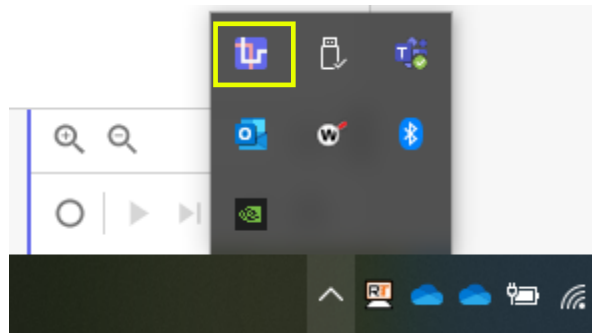
2) Switching between Simulation mode and Live mode from the labCONTROL icon

Previously, switching off Simulation mode was done by opening labCONTROL.dll and changing True to False within the document. Now this can be done from the labCONTROL icon.

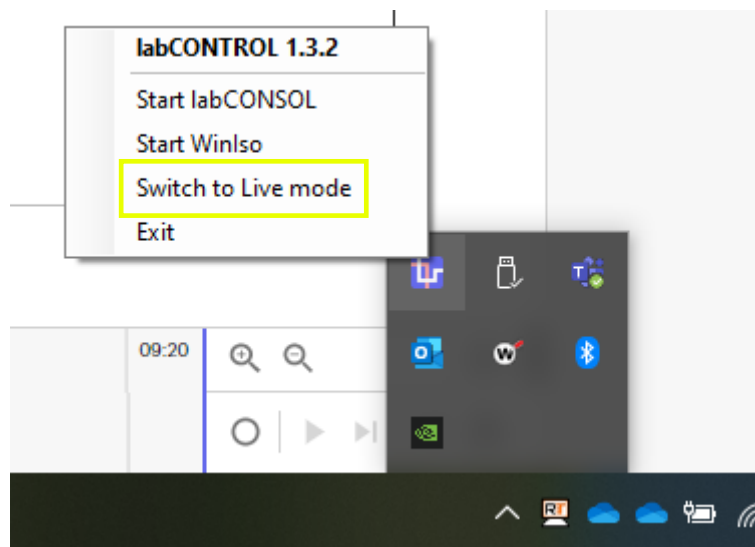
Starting from labCONSOL in Simulation mode (stated at the top of the labCONSOL window):



Go to the Windows taskbar:

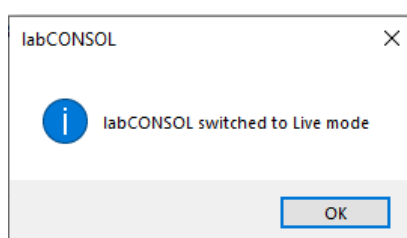
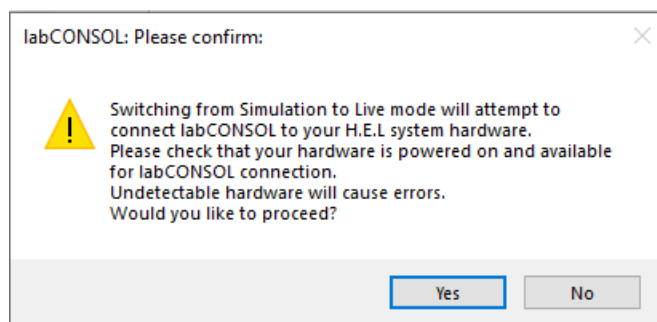


Right-click on the labCONTROL icon in the taskbar.



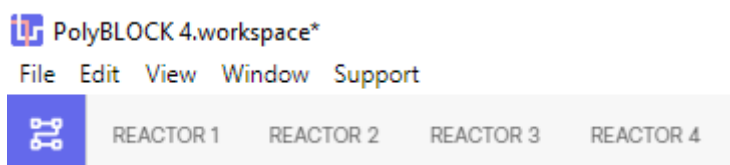
Select 'Switch to Live mode'.

This warning message below pops up, click 'Yes'.

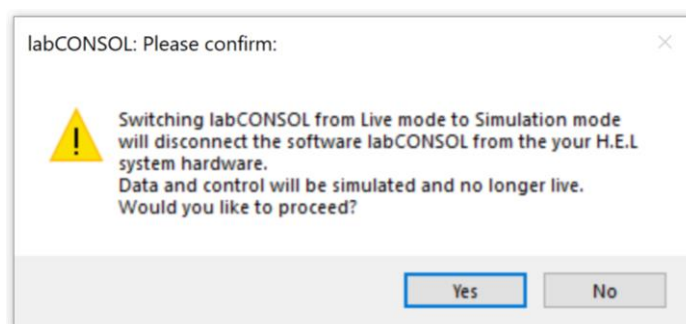


Press 'OK'.

Now the 'SIMULATION MODE' label has disappeared from the top of the screen:

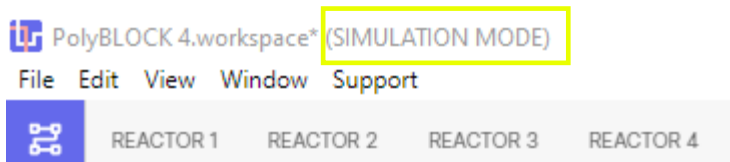


To switch back to Simulation mode, repeat the previous steps, this time selecting 'Switch to Simulation Mode' when right-clicking on the labCONTROL icon in the taskbar. This warning message pops up:



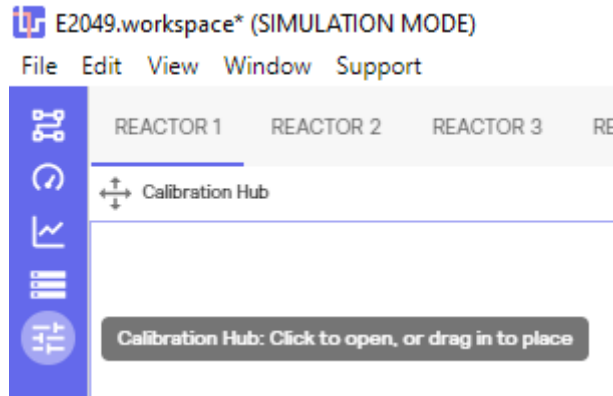
Click 'Yes'.

'SIMULATION MODE' is now back at the top of the screen:

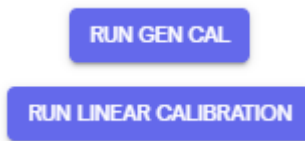


3) A manually entered temperature can be used in pH calibrations

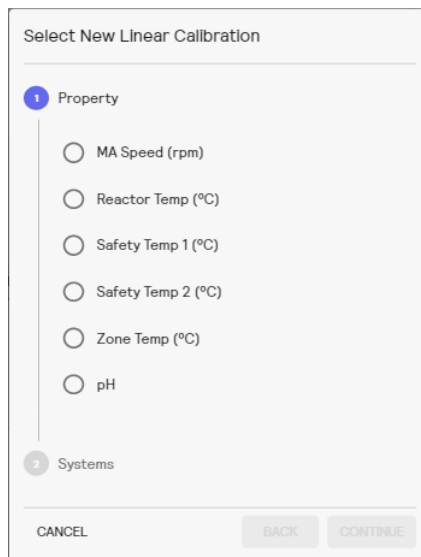
For pH calibration, open the Calibration Hub:



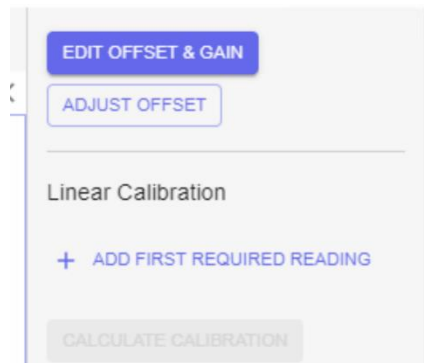
Select 'Run linear calibration':



Select pH in 'Property', and the probe to calibrate under 'Systems' (options will depend on the number of probes in your system):



To add a calibration point, click on 'Add First Required Reading' in the details menu:



This opens the calibration window below, where the temperature needed for the pH calibration is read from the temperature probe. In v1.3.2, there is now the option to override the probe temperature and manually enter the temperature to be used for the calibration.

